

THE REPUBLIC OF UGANDA
MINISTRY OF HEALTH

COVID-19 VACCINATION SITES

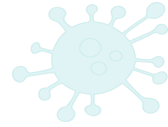
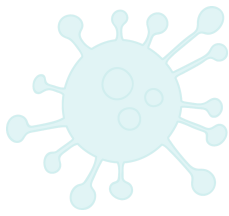
REGION	DISTRICT	SUBCOUNTY	HEALTH FACILITY
Kigezi	Rukiga District	Muhanga Town Council	Bukinda HC III
Kigezi	Rukiga District	Rukiga Town Council	Mparo HC IV
Kigezi	Rukiga District	Kamwezi Subcounty	Kamwezi HC IV
Kigezi	Rukiga District	Kashambya Subcounty	Kashambya HC III
Kigezi	Rukiga District	Muhanga Town Council	Rotom Clinic
Kigezi	Rukiga District	Kashambya Subcounty	Kitanga Hilbe HC III
Kigezi	Rukiga District	Kamwezi Subcounty	Kyogo HC III
Kigezi	Rukungiri District	Eastern Division (Rukungiri MC)	Rukungiri HC IV
Kigezi	Rukungiri District	Southern Division (Rukungiri MC)	Karoli Lwanga (Nyakibale) Hospital
Kigezi	Rukungiri District	Nyarushanje Subcounty	Cou Kisiizi Hospital
Kigezi	Rukungiri District	Bugangari Subcounty	Bugangari HC IV
Kigezi	Rukungiri District	Kebisoni Town Council	Kebisoni HC IV
Kigezi	Rukungiri District	Buhunga Subcounty (Rukungiri District)	Buhunga HC IV
Kigezi	Rukungiri District	Buyanja Town Council	Buyanja HC III
Kigezi	Rukungiri District	Ruhinda Subcounty	Ruhinda HC III
Kigezi	Rukungiri District	Nyakishenyi Subcounty	Nyakishenyi HC III
Kigezi	Rukungiri District	Bwambara Subcounty	Bwambara HC III
Lango	Alebtong District	Alebtong Town Council	Alebtong HC IV
Lango	Alebtong District	Apala Subcounty	Apala HC III
Lango	Alebtong District	Amugo Subcounty	Amugu HC III
Lango	Alebtong District	Abako Subcounty	Abako HC III
Lango	Alebtong District	Omoro Subcounty	Omoro HC III
Lango	Alebtong District	Akura Subcounty	Akura HC II
Lango	Alebtong District	Omoro Subcounty	Angetta HC III
Lango	Alebtong District	Abia Subcounty	Abia HC II (Abia Subcounty)
Lango	Alebtong District	Omoro Subcounty	Adwir HC II
Lango	Alebtong District	Aloi Subcounty	Anara HC II
Lango	Amolatar District	Amolatar Town Council	Amolatar HC IV
Lango	Amolatar District	Aputi Subcounty	Aputi HC III
Lango	Amolatar District	Namasale Subcounty	Namasale HC III
Lango	Amolatar District	Etam Town Council	Etam HC III
Lango	Amolatar District	Aputi Subcounty	Amai Community Hospital
Lango	Apac District	Akere Division	Apac Hospital
Lango	Apac District	Teboke Subcounty	Teboke HC III
Lango	Apac District	Ibuje Subcounty	Ibuje HC III
Lango	Apac District	Akokoro Subcounty	Akokoro HC III
Lango	Apac District	Apoi Subcounty	Apoi HC III
Lango	Dokolo District	Dokolo Town Council	Dokolo HC IV
Lango	Dokolo District	Bata Subcounty	Bata HC III
Lango	Dokolo District	Kwera Subcounty	Kwera HC III
Lango	Dokolo District	Adok Subcounty	Adok HC II
Lango	Dokolo District	Agwata Subcounty	Agwatta HC III
Lango	Dokolo District	Dokolo Subcounty	Awiri HC II
Lango	Dokolo District	Kangai Subcounty	Kangai HC III
Lango	Dokolo District	Adeknino Subcounty	Awelo HC II
Lango	Dokolo District	Okwalongwen Subcounty	Abalang HC II (Okwalongwen Subcount
Lango	Dokolo District	Amwoma Subcounty	Amwoma HC II
Lango	Kole District	Aboke Subcounty	Aboke HC IV
Lango	Kole District	Akalo Subcounty	Akalo HC III
Lango	Kole District	Ayer Subcounty	Ayer HC III
Lango	Kole District	Bala Subcounty	Bala HC III
Lango	Kole District	Alito Subcounty	Alito HC III



THE REPUBLIC OF UGANDA
MINISTRY OF HEALTH

COVID-19 VACCINATION SITES

REGION	DISTRICT	SUBCOUNTY	HEALTH FACILITY
Lango	Kole District	Aboke Subcounty	Opeta HC II
Lango	Kole District	Alito Subcounty	Apalabarowo HC III
Lango	Kwania District	Aduku Town Council	Aduku HC IV
Lango	Kwania District	Inomo Subcounty	Inomo HC III
Lango	Kwania District	Abongomola Subcounty	Abongomola HC III
Lango	Kwania District	Nambieso Subcounty	Nambieso HC III
Lango	Kwania District	Chawente Subcounty	Chawente HC III
Lango	Kwania District	Chawente Subcounty	Apwori HC III
Lango	Lira District	Adyel Division	Lira Regional Referral Hospital
Lango	Lira District	Central Division (Lira MC)	Pag Mission Hospital
Lango	Lira District	Amach Subcounty	Amach HC IV
Lango	Lira District	Lira Subcounty	Lira University Hospital
Lango	Lira District	Ogur Subcounty	Ogur HC IV
Lango	Lira District	Ojwina Division	Ober HC III
Lango	Lira District	Railways Division	Ayago HC III
Lango	Lira District	Barr Subcounty	Barr HC III
Lango	Lira District	Aromo Subcounty	Aromo HC III
Lango	Lira District	Adekokwok Subcounty	Boroboro HC III
Lango	Otuke District	Otuke Town Council	Orum HC IV
Lango	Otuke District	Olilim Subcounty	Olilim HC III
Lango	Otuke District	Okwang Subcounty	Okwang HC III
Lango	Otuke District	Adwari Subcounty	Okwongo HC III
Lango	Otuke District	Ogor Subcounty	Atangwata HC III
Lango	Oyam District	Loro Town Council	Loro HC III
Lango	Oyam District	Kamdini Subcounty	Aber Hospital
Lango	Oyam District	Oyam Town Council	Anyeke HC IV
Lango	Oyam District	Otwal Subcounty	Otwal HC III
Lango	Oyam District	Ngai Subcounty	Ngai HC III
Lango	Oyam District	Minakulu Town Council	Minakulu HC III
Lango	Oyam District	Iceme Town Council	Iceme HC III (Iceme Town Council)
Lango	Oyam District	Abok Subcounty	Ariba HC III
Lango	Oyam District	Myene Subcounty	Acimi HC II
Lango	Oyam District	Aber Subcounty	Atura HC III
North Central	Buikwe District	Central Division (Njeru MC)	Njeru Town Council HC III
North Central	Buikwe District	Central Division (Lugazi MC)	Kawolo Hospital
North Central	Buikwe District	Wakisi Division	Wakisi HC III
North Central	Buikwe District	Buikwe Town Council	Buikwe HC III
North Central	Buikwe District	Nkokonjeru Town Council	Nkokonjeru Hospital
North Central	Buikwe District	Central Division (Lugazi MC)	Lugazi Scoul Hospital
North Central	Buikwe District	Nyenga Division	St. Francis Nyenga Hospital
North Central	Buikwe District	Buikwe Town Council	Buikwe St. Charles Lwanga Hospital
North Central	Buikwe District	Ssi-Bukunja Subcounty	Ssi HC III
North Central	Buikwe District	Najjembe Division	Najjembe HC III
North Central	Buvuma District	Buvuma Town Council	Buvuma HC IV
North Central	Buvuma District	Buvuma Bugaya Subcounty	Bugaya HC III
North Central	Buvuma District	Bweema Subcounty	Lwaje HC II
North Central	Buvuma District	Busamuzi Subcounty	Busamuzi HC III
North Central	Buvuma District	Bweema Subcounty	Namatale HC III
North Central	Buvuma District	Bweema Subcounty	Bweema HC II
North Central	Buvuma District	Nairambi Subcounty	Lukale HC II
North Central	Buvuma District	Buvuma Bugaya Subcounty	Nkata HC II
North Central	Kassanda District	Kassanda Town Council	Kassanda HC IV
North Central	Kassanda District	Bukuya Subcounty	Bukuya HC III
North Central	Kassanda District	Kiganda Subcounty	Kiganda HC IV
North Central	Kassanda District	Myanzi Subcounty	Myanzi HC III



THE REPUBLIC OF UGANDA
MINISTRY OF HEALTH

COVID-19 VACCINATION SITES

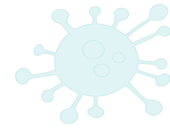
REGION	DISTRICT	SUBCOUNTY	HEALTH FACILITY
North Central	Kassanda District	Kalwana Subcounty	Kikandwa HC III
North Central	Kassanda District	Kitumbi Subcounty	Mundadde HC II
North Central	Kassanda District	Nalutuntu Subcounty	Nalutuntu HC III
North Central	Kayunga District	Kayunga Town Council	Kayunga Hospital
North Central	Kayunga District	Busaana Subcounty	Busana HC III
North Central	Kayunga District	Wabwoko-Kitimbwa Subcounty	Wabwoko HC III
North Central	Kayunga District	Kangulumira Subcounty	Kangulumira HC IV
North Central	Kayunga District	Kayonza Kayunga Subcounty	Lugasa HC III
North Central	Kayunga District	Kayunga Town Council	Ntenjeru HC III
North Central	Kayunga District	Nazigo Subcounty	Nazigo HC III
North Central	Kayunga District	Wabwoko-Kitimbwa Subcounty	Nkokonjeru HC III
North Central	Kayunga District	Galiraaya Subcounty	Galiraya HC III
North Central	Kayunga District	Bbaale Subcounty	Bbaale HC IV
North Central	Kayunga District	Galiraaya Subcounty	Kawongo HC III
North Central	Kayunga District	Nazigo Subcounty	Bukamba HC III
North Central	Kiboga District	Kiboga Town Council	Kiboga Hospital
North Central	Kiboga District	Bukomero Town Council	Bukomero HC IV
North Central	Kiboga District	Lwamata Town Council	Lwamata HC III
North Central	Kiboga District	Muwanga Subcounty	Muwanga HC III
North Central	Kiboga District	Nkandwa Subcounty	Kambugu HC III
North Central	Kyankwanzi District	Butemba Town Council	Butemba HC III
North Central	Kyankwanzi District	Bananywa Subcounty	Mujunza HC III
North Central	Kyankwanzi District	Ntwetwe Town Council	Ntwetwe HC IV
North Central	Kyankwanzi District	Mulagi Subcounty	Nalinya Ndagire HC III
North Central	Kyankwanzi District	Nsambya Subcounty	Kikonda HC III
North Central	Kyankwanzi District	Kyankwanzi Town Council	Kyankwanzi HC III
North Central	Kyankwanzi District	Kyankwanzi Town Council	National Leadership institute HC II
North Central	Kyankwanzi District	Wattuba Subcounty	Kikolimbo HC II
North Central	Kyankwanzi District	Gayaza Subcounty	Kiyuni HC III
North Central	Luwero District	Luwero Town Council	Luwero Hospital
North Central	Luwero District	Nyimbwa Subcounty	Nyimbwa HC IV
North Central	Luwero District	Zirobwe Subcounty	Zirobwe HC III
North Central	Luwero District	Kalagala Subcounty	Kalagala HC IV
North Central	Luwero District	Kikyusa Subcounty	Wabusana HC III
North Central	Luwero District	Katikamu Subcounty	Katikamu HC III
North Central	Luwero District	Bombo Town Council	Bombo HC III
North Central	Luwero District	Makulubita Subcounty	Kasozi HC III
North Central	Luwero District	Wobulenzi Town Council	Bukalasa HC III
North Central	Luwero District	Wobulenzi Town Council	Njovu Medical Center HC III
North Central	Luwero District	Kalagala Subcounty	St. Kizito Natyole HC III
North Central	Luwero District	Bamunanika Subcounty	Ssekamuli HC III
North Central	Luwero District	Katikamu Subcounty	Kyalugondo HC III
North Central	Luwero District	Bamunanika Subcounty	Bamunanika HC III
North Central	Mityana District	Central Division (Mityana MC)	Mityana Hospital
North Central	Mityana District	Ssekanyonyi Town Council	Ssekanyonyi HC IV
North Central	Mityana District	Malangala Subcounty	Malangala HC III
North Central	Mityana District	Kalangaalo Subcounty	Kyantungo HC IV
North Central	Mityana District	Maanyi Subcounty	Maanyi HC III
North Central	Mityana District	Kakindu Subcounty	Mwera HC IV
North Central	Mityana District	Bulera Subcounty	Bulera HC III
North Central	Mityana District	Kalangaalo Subcounty	Kyamusisi HC III
North Central	Mityana District	Kikandwa Subcounty	Kikandwa HC III
North Central	Mityana District	Butayunja Subcounty	Kitongo HC III
North Central	Mityana District	Ttamu Division	Magala HC III
North Central	Mubende District	Eastern Division (Mubende MC)	Mubende Regional Referral Hospital
North Central	Mubende District	Kasambya Town Council	Mubende Kasambya HC III Govt



THE REPUBLIC OF UGANDA
MINISTRY OF HEALTH

COVID-19 VACCINATION SITES

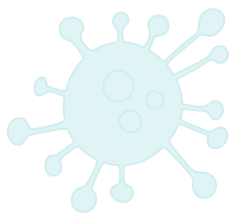
REGION	DISTRICT	SUBCOUNTY	HEALTH FACILITY
North Central	Mubende District	Kitenga Subcounty	Kitenga HC III
North Central	Mubende District	Kibalinga Subcounty	Kibalinga HC III
North Central	Mubende District	Butoologo Subcounty	Butoologo HC III
North Central	Mubende District	Madudu Subcounty	Madudu HC III
North Central	Mubende District	Kasambya Subcounty (Mubende District)	Kabamba Barracks HC III
North Central	Mubende District	Kiyuni Subcounty	Kiyuni (Mubende) HC III
North Central	Mubende District	Kigando Subcounty	Butawata HC III
North Central	Mubende District	Nabingoola Subcounty	Nabingoola HC III
North Central	Mubende District	Kitenga Subcounty	Kalonga HC III
North Central	Mubende District	Western Division (Mubende MC)	Lwemikomago HC III
North Central	Mukono District	Central Division (Mukono MC)	Mukono General Hospital
North Central	Mukono District	Nagalama Town Council	St. Francis Naggalama Hospital
North Central	Mukono District	Nama Subcounty	Katoogo HC III
North Central	Mukono District	Goma Division	Goma HC III
North Central	Mukono District	Kisoga Town Council	Kojja HC IV
North Central	Mukono District	Kasawo Subcounty	Kasawo HC III
North Central	Mukono District	Kyampisi Subcounty	Kyampisi HC III
North Central	Mukono District	Nakisunga Subcounty	Seeta Nazigo HC III
North Central	Mukono District	Nagalama Town Council	Nakifuma HC III
North Central	Mukono District	Nagojje Subcounty	Naggojje HC III
North Central	Mukono District	Ntunda Subcounty	Kyabazaala HC III
North Central	Mukono District	Kkoombe Island Subcounty	Koome HC III
North Central	Mukono District	Seeta-Namuganga Subcounty	Namuganga HC III
North Central	Mukono District	Mpatta Subcounty	Kabanga HC III
North Central	Mukono District	Mpunge Subcounty	Mpunge HC III
North Central	Mukono District	Nagalama Town Council	Nabalanga HC III
North Central	Mukono District	Kimmenyedde Subcounty	Kimenyedde HC II
North Central	Mukono District	Nama Subcounty	Nama Wellness Community HC II
North Central	Nakaseke District	Kapeeka Subcounty	Kapeeka HC III
North Central	Nakaseke District	Nakaseke Town Council	Nakaseke Hospital
North Central	Nakaseke District	Kikamulo Subcounty	Kikamulo HC III
North Central	Nakaseke District	Ngoma Town Council	Ngoma HC IV
North Central	Nakaseke District	Kinyogoga Subcounty	Kinyogoga HC III
North Central	Nakasongola District	Nakasongola Town Council	Nakasongola HC IV
North Central	Nakasongola District	Kakooge Town Council	Kakooge HC III
North Central	Nakasongola District	Nabiswera Subcounty	Nabiswera HC IV
North Central	Nakasongola District	Lwampanga Subcounty	Lwampanga HC III
North Central	Nakasongola District	Kalungi Subcounty	Kalungi (Kalungi) HC III
North Central	Nakasongola District	Kalongo Subcounty	Bamugolodde HC III
South Central	Bukomansimbi District	Butenga Subcounty	Butenga HC IV
South Central	Bukomansimbi District	Kibinge Subcounty	Mirambi HC III
South Central	Bukomansimbi District	Bigasa Subcounty	Bigasa HC III
South Central	Bukomansimbi District	Kitanda Subcounty	Kitanda HC III
South Central	Bukomansimbi District	Bukomansimbi Town Council	St. Mary's Maternity & Nursing Home H
South Central	Butambala District	Gombe Town Council	Gombe (Butambala) Hospital
South Central	Butambala District	Bulo Subcounty	Bulo HC III
South Central	Butambala District	Kalamba Subcounty	Epi-Centre Senge HC III
South Central	Butambala District	Budde Subcounty	Kyabadaza HC III
South Central	Butambala District	Kibibi Subcounty	Butaaka HC II
South Central	Gomba District	Kanoni Town Council	Kanoni HC III
South Central	Gomba District	Mpenja Subcounty	Mpenja HC III
South Central	Gomba District	Kifampa Subcounty	Kifampa HC III
South Central	Gomba District	Maddu Town Council	Maddu HC IV
South Central	Gomba District	Kyayi Subcounty	Kyayi HC III
South Central	Gomba District	Tababinzi Subcounty	Ngomanene HC II
South Central	Gomba District	Kifampa Subcounty	Kisozi HC III
South Central	Gomba District	Kyegonza Subcounty	Mamba HC II



THE REPUBLIC OF UGANDA
MINISTRY OF HEALTH

COVID-19 VACCINATION SITES

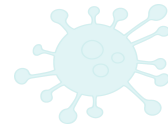
REGION	DISTRICT	SUBCOUNTY	HEALTH FACILITY
South Central	Kalangala District	Kalangala Town Council	Kalangala HC IV
South Central	Kalangala District	Bubeke Subcounty	Bubeke HC III
South Central	Kalangala District	Kyamuswa Subcounty	Bukasa HC IV
South Central	Kalangala District	Bufumira Subcounty	Bufumira HC III
South Central	Kalangala District	Bufumira Subcounty	Lulamba HC III
South Central	Kalangala District	Mazinga Subcounty	Mazinga HC III
South Central	Kalungu District	Bukulula Subcounty	Bukulula HC IV
South Central	Kalungu District	Kalungu Subcounty	Villa Maria Hospital
South Central	Kalungu District	Kalungu Town Council	Kalungu HC III
South Central	Kalungu District	Kyamuliibwa Town Council	Kyamulibwa HC III
South Central	Kalungu District	Bukulula Subcounty	Kiti HC III
South Central	Kalungu District	Lukaya Town Council	Lukaya HC III
South Central	Kalungu District	Lwabenge Subcounty	Kasambya (Kalungu) HC III
South Central	Kalungu District	Kyamuliibwa Subcounty	Kabaale HC II
South Central	Kalungu District	Lwabenge Subcounty	Kiragga HC III
South Central	Kyotera District	Kalisizo Town Council	Kalisizo Hospital
South Central	Kyotera District	Kasaali Town Council	Kasaali HC III
South Central	Kyotera District	Kakuuto Subcounty	Kakuuto HC IV
South Central	Kyotera District	Lwankoni Subcounty	Lwankoni HC III
South Central	Kyotera District	Mutukula Town Council	Mutukula HC III
South Central	Kyotera District	Kyebe Subcounty	Kyebe HC III
South Central	Kyotera District	Kabira Subcounty (Kyotera District)	Kabira (Kyotera) HC III
South Central	Lwengo District	Lwengo Subcounty	Lwengo HC IV
South Central	Lwengo District	Kyazanga Town Council	Kyazanga HC IV
South Central	Lwengo District	Kisekka Subcounty	Kiwangala HC IV
South Central	Lwengo District	Kkingo Subcounty	Nkoni HC III
South Central	Lwengo District	Lwengo Subcounty	Mbirizi St. Francis HC III
South Central	Lyantonde District	Lyantonde Town Council	Lyantonde Hospital
South Central	Lyantonde District	Kinuuka Subcounty	Kinuuka HC III
South Central	Lyantonde District	Kasagama Subcounty	Kasagama HC III
South Central	Lyantonde District	Mpumudde Subcounty	Mpumudde HC III
South Central	Lyantonde District	Lyakajura Subcounty	Lyakajura HC II
South Central	Lyantonde District	Kaliiro Subcounty	Kaliiro HC III
South Central	Masaka District	Kimanya-Kyabakuza Division	Masaka Regional Referral Hospital
South Central	Masaka District	Katwe-Butego Division	Masaka Municipal Clinic HC II
South Central	Masaka District	Nyendo-Senyange Division	Nyendo HC II
South Central	Masaka District	Kyanamukaaka Subcounty	Kyanamukaaka HC IV
South Central	Masaka District	Mukungwe Subcounty	Kiyumba HC IV
South Central	Masaka District	Buwunga Subcounty (Masaka District)	Buwunga HC III
South Central	Masaka District	Nyendo-Senyange Division	Kitovu Hospital
South Central	Masaka District	Bukakata Subcounty	Bukakata HC III
South Central	Masaka District	Mukungwe Subcounty	Mpugwe HC III
South Central	Masaka District	Kyesiiga Subcounty	Kamulegu HC III
South Central	Mpigi District	Mpigi Town Council	Mpigi HC IV
South Central	Mpigi District	Muduma Subcounty	Muduuma HC III
South Central	Mpigi District	Kayabwe Town Council	Nkozi Hospital
South Central	Mpigi District	Buwama Town Council	Buwama HC III
South Central	Mpigi District	Kammengo Subcounty	Butoolo HC III
South Central	Mpigi District	Kiringente Subcounty	Sekiwunga HC III
South Central	Mpigi District	Kituntu Subcounty	Kituntu HC III
South Central	Mpigi District	Buwama Subcounty	Bunjako HC III
South Central	Mpigi District	Nkozi Subcounty	Nindy HC III
South Central	Mpigi District	Kammengo Subcounty	Buyiga HC III



THE REPUBLIC OF UGANDA
MINISTRY OF HEALTH

COVID-19 VACCINATION SITES

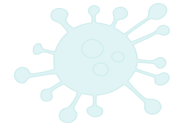
REGION	DISTRICT	SUBCOUNTY	HEALTH FACILITY
South Central	Rakai District	Rakai Town Council	Rakai Hospital
South Central	Rakai District	Kagamba Subcounty	Kimuli HC III
South Central	Rakai District	Lwamaggwa Subcounty	Lwamaggwa Govt HC III
South Central	Rakai District	Kibanda Subcounty	Kibanda HC III
South Central	Rakai District	Kyalulangira Subcounty	Kyalulangira HC III
South Central	Rakai District	Kifamba Subcounty	Kifamba HC III
South Central	Rakai District	Lwanda Subcounty	Lwanda HC III
South Central	Rakai District	Kacheera Subcounty	Kacheera HC III
South Central	Rakai District	Ddwaniro Subcounty (Rakai District)	Buyamba HC III
South Central	Rakai District	Kiziba Subcounty (Rakai District)	Rakai Kiziba HC II
South Central	Rakai District	Lwamaggwa Subcounty	Kyabigondo HC II
South Central	Rakai District	Lwamaggwa Subcounty	Bugona HC II
South Central	Rakai District	Kyalulangira Subcounty	Kibaale HC II
South Central	Rakai District	Kacheera Subcounty	Katatenga HC II
South Central	Sembabule District	Sembabule Town Council	Ssembabule HC IV
South Central	Sembabule District	Mateete Town Council	Mateete HC III
South Central	Sembabule District	Lwemiyaga Subcounty	Lwemiyaga HC III
South Central	Sembabule District	Lwebitakuli Subcounty	Lwebitakuli Gvt HC III
South Central	Sembabule District	Ntuusi Subcounty	Ntuusi HC IV
South Central	Wakiso District	Kasangati Town Council	Kasangati HC IV
South Central	Wakiso District	Entebbe Division A	Entebbe National Referral Hospital
South Central	Wakiso District	Bweyogerere Division	Namboole NTFU
South Central	Wakiso District	Kajjansi Town Council	Kajjansi HC IV
South Central	Wakiso District	Wakiso Town Council	Wakiso HC IV
South Central	Wakiso District	Katabi Town Council	Kisubi Hospital
South Central	Wakiso District	Ndejje Division	Mildmay Uganda Hospital
South Central	Wakiso District	Kyengeru Town Council	Nsangi HC III
South Central	Wakiso District	Kira Division	LifeLink (Kyaliwajala) Hospital
South Central	Wakiso District	Entebbe Division A	Entebbe UVRI HC II
South Central	Wakiso District	Ndejje Division	Ndejje HC IV
South Central	Wakiso District	Gombe Division	Buwambo HC IV
South Central	Wakiso District	Kira Division	Kira HC III
South Central	Wakiso District	Nabweru Division	Nabweru HC III
South Central	Wakiso District	Namayumba Town Council	Namayumba HC IV
South Central	Wakiso District	Bweyogerere Division	Bweyogerere HC III
South Central	Wakiso District	Ndejje Division	Doctors Hospital Seguku Hospital
South Central	Wakiso District	Masuliita Town Council	Kiziba HC III
South Central	Wakiso District	Bunamwaya Division	Mutungo HC II
South Central	Wakiso District	Kasanje Subcounty	Kasanje HC III
South Central	Wakiso District	Kasangati Town Council	Saidina Abubakar Islamic Hospital
South Central	Wakiso District	Kakiri Town Council	Kakiri HC III
South Central	Wakiso District	Ndejje Division	Joint Clinical Research Center (JCRC) H
South Central	Wakiso District	Wakiso Subcounty	Wakiso EPI Centre HC III
South Central	Wakiso District	Massajja Division	Masajja Kyabagu HC III
South Central	Wakiso District	Busukuma Subcounty	Namulonge HC III
South Central	Wakiso District	Wakiso Subcounty	Bbira Ngo HC II
South Central	Wakiso District	Namayumba Town Council	Namayumba Epi Centre HC III
South Central	Wakiso District	Mende Subcounty	Mende HC III
South Central	Wakiso District	Mende Subcounty	Bulondo HC III
South Central	Wakiso District	Nabweru Division	Community Health Plan Uganda
South Central	Wakiso District	Kasangati Town Council	Watubba HC III
South Central	Wakiso District	Kajjansi Town Council	Nakawuka HC III
South Central	Wakiso District	Bunamwaya Division	Lifeline Hospital
South Central	Wakiso District	Entebbe Division A	Katabi HC III



THE REPUBLIC OF UGANDA
MINISTRY OF HEALTH

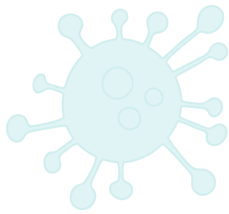
COVID-19 VACCINATION SITES

REGION	DISTRICT	SUBCOUNTY	HEALTH FACILITY
Teso	Amuria District	Wera Subcounty	Wera HC III
Teso	Amuria District	Orungo Subcounty	Orungo HC III
Teso	Amuria District	Amuria Town Council	Amuria Hospital
Teso	Amuria District	Morungatuny Subcounty	Morungatuny HC III
Teso	Amuria District	Abarilela Subcounty	Abarilela HC III
Teso	Bukedea District	Bukedea Town Council	Bukedea HC IV
Teso	Bukedea District	Kachumbala Subcounty	Kachumbala HC III
Teso	Bukedea District	Kolir Subcounty	Kolir HC III
Teso	Bukedea District	Kabarwa Subcounty	Kabarwa HC III
Teso	Bukedea District	Kidongole Subcounty	Kidongole HC III
Teso	Bukedea District	Malera Subcounty	Malera HC III
Teso	Kaberamaido District	Ochero Subcounty	Ochero HC III
Teso	Kaberamaido District	Kaberamaido Town Council	Kaberamaido Hospital
Teso	Kaberamaido District	Alwa Subcounty	Alwa HC III
Teso	Kaberamaido District	Aperikira Subcounty	Aperikira HC III
Teso	Kaberamaido District	Kobulubulu Subcounty	Kobulubulu HC III
Teso	Kalaki District	Anyara Subcounty	Anyara HC III
Teso	Kalaki District	Kalaki Subcounty	Kalaki HC III
Teso	Kalaki District	Otuboi Subcounty	Otuboi HC III
Teso	Kalaki District	Apapai Subcounty	Apapai HC III
Teso	Kalaki District	Bululu Subcounty	Bululu HC III
Teso	Kalaki District	Otuboi Subcounty	Lwala Hospital
Teso	Kapelebyong District	Kapelebyong Subcounty	Kapelebyong HC IV
Teso	Kapelebyong District	Acowa Subcounty	Acowa HC III
Teso	Kapelebyong District	Okungur Subcounty	Aeket HC II
Teso	Kapelebyong District	Obalanga Subcounty	Obalanga HC III
Teso	Kapelebyong District	Kapelebyong Subcounty	St. Francis Acumet HC III
Teso	Katakwi District	Katakwi Town Council	Katakwi Hospital
Teso	Katakwi District	Ngariam Subcounty	Ngariam HC III
Teso	Katakwi District	Toroma Subcounty	Toroma HC IV
Teso	Katakwi District	Magoro Subcounty	Magoro HC III
Teso	Katakwi District	Ongongoja Subcounty	Aketa HC III
Teso	Kumi District	Southern Division (Kumi MC)	Kumi HC IV
Teso	Kumi District	Ongino Subcounty	Ongino HC III
Teso	Kumi District	Nyero Subcounty	Nyero HC III
Teso	Kumi District	Kumi Subcounty	Omatenga HC III
Teso	Kumi District	Mukongoro Subcounty	Mukongoro HC III
Teso	Kumi District	Kanyum Subcounty	Kamaca HC III
Teso	Kumi District	Kanyum Subcounty	Kanyum HC III
Teso	Kumi District	Atatur Subcounty	Atatur Hospital
Teso	Kumi District	Ongino Subcounty	Kumi (Ongino) Hospital
Teso	Ngora District	Ngora Town Council	Ngora District Maternity Unit HC III
Teso	Ngora District	Ngora Town Council	Ngora HC IV
Teso	Ngora District	Kobwin Subcounty	Kobwin HC III
Teso	Ngora District	Kapir Subcounty	Kapir HC III
Teso	Ngora District	Mukura Subcounty	Ajeluk HC III
Teso	Ngora District	Mukura Subcounty	Mukura HC III
Teso	Ngora District	Ngora Subcounty	Agu HC III
Teso	Ngora District	Ngora Town Council	Ngora Freda Carr Hospital
Teso	Serere District	Serere Town Council	Serere HC IV



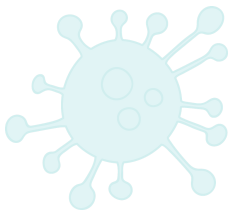
COVID-19 VACCINATION SITES

REGION	DISTRICT	SUBCOUNTY	HEALTH FACILITY
Teso	Serere District	Kyere Subcounty	Kyere HC III
Teso	Serere District	Kadungulu Town Council	Kadungulu HC III
Teso	Serere District	Bugondo Subcounty	Bugondo HC III
Teso	Serere District	Atiira Subcounty	Atiira HC III
Teso	Serere District	Bugondo Subcounty	Apapai HC IV
Teso	Serere District	Bugondo Subcounty	Kamod HC II
Teso	Serere District	Kateta Subcounty	Kateta HC III
Teso	Serere District	Kidetok Town Council	Kidetok Mission HC III
Teso	Serere District	Pingire Subcounty	Pingire HC III
Teso	Soroti District	Northern Division (Soroti MC)	Soroti Regional Referral Hospital
Teso	Soroti District	Gweri Subcounty	Gweri HC III
Teso	Soroti District	Katine Subcounty	Tiriri HC IV
Teso	Soroti District	Western Division (Soroti MC)	Western Division HC III
Teso	Soroti District	Northern Division (Soroti MC)	Princess Diana HC IV
Teso	Soroti District	Asuret Subcounty	Asuret HC III
Tooro	Bundibugyo District	Bundibugyo Town Council	Bundibugyo Hospital
Tooro	Bundibugyo District	Nyahuka Town Council	Nyahuka HC IV
Tooro	Bundibugyo District	Ngamba Subcounty	Kikyo HC IV
Tooro	Bundibugyo District	Butama-Mitunda Town Council	Butama HC III
Tooro	Bundibugyo District	Bubukwanga Subcounty	Bubukwanga HC III
Tooro	Bundibugyo District	Bukonzo Subcounty	Bukangama HC III
Tooro	Bundibugyo District	Sindila Subcounty	Kakuka HC III
Tooro	Bundibugyo District	Ntandi Town Council	Ntandi HC III
Tooro	Bundibugyo District	Busaru Subcounty	Busaru HC IV
Tooro	Bundibugyo District	Tokwe Subcounty	Kanyamwirima Army HC III
Tooro	Bunyangabu District	Kibiito Town Council	Kibiito HC IV
Tooro	Bunyangabu District	Kyamukube Town Council	Mitandi HC III
Tooro	Bunyangabu District	Kiyombya Subcounty	Kiyombya HC III
Tooro	Bunyangabu District	Kisomoro Subcounty	Kisomoro HC III
Tooro	Bunyangabu District	Rwimi Town Council	Rwimi HC III
Tooro	Bunyangabu District	Kibiito Subcounty	Kasunganyanja HC III
Tooro	Bunyangabu District	Buheesi Subcounty	Kabahango HC III
Tooro	Bunyangabu District	Rwimi Subcounty	Kakinga HC III
Tooro	Bunyangabu District	Kyamukube Town Council	Rambia HC III
Tooro	Kabarole District	Southern Division (Kabarole MC)	Fort Portal Regional Referral Hospital
Tooro	Kabarole District	Southern Division (Kabarole MC)	Mucwa HC III
Tooro	Kabarole District	Bukuuku Subcounty	Bukuuku HC IV
Tooro	Kabarole District	Ruteete Subcounty (Kabarole District)	Ruteete HC III
Tooro	Kabarole District	Kijura Town Council	Kijura HC III
Tooro	Kabarole District	Kasenda Subcounty	Kasenda HC III
Tooro	Kabarole District	Busoro Subcounty	Kidubuli HC III
Tooro	Kabarole District	Mugusu Town Council	Mugusu HC III
Tooro	Kamwenge District	Kahunge Subcounty	Rukunyu Hospital
Tooro	Kamwenge District	Nkoma Katalyeba Town Council	Rwamwanja HC III
Tooro	Kamwenge District	Bigodi Town Council	Bigodi HC III
Tooro	Kamwenge District	Kabambiro Subcounty	Kabambiro HC III
Tooro	Kamwenge District	Kamwenge Town Council	Kamwenge HC III
Tooro	Kamwenge District	Biguli Subcounty	Biguli HC III
Tooro	Kamwenge District	Kamwenge Town Council	Padre Pio HC III
Tooro	Kamwenge District	Bwizi Subcounty	Bwizi HC III
Tooro	Kamwenge District	Nkoma Subcounty	Mabale NGO HC II
Tooro	Kamwenge District	Bihanga Subcounty (Kamwenge District)	Bihanga HC II
Tooro	Kamwenge District	Busiriba Subcounty	Bunoga HC III
Tooro	Kamwenge District	Kabuqa Town Council	Kabuqa HC III
Tooro	Kamwenge District	Kahunge Subcounty	Kiyagara HC II
Tooro	Kamwenge District	Kahunge Town Council	Kyabenda HC III
Tooro	Kamwenge District	Busiriba Subcounty	Busiriba HC II
Tooro	Kamwenge District	Bihanga Subcounty (Kamwenge District)	Kabingo (Bihanga) HC II



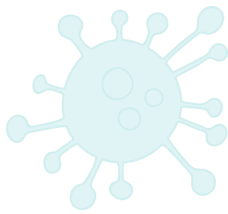
COVID-19 VACCINATION SITES

REGION	DISTRICT	SUBCOUNTY	HEALTH FACILITY
Tooro	Kamwenge District	Nkoma KatalyebaTown Council	Kyempango HC III
Tooro	Kamwenge District	Nkoma Subcounty	Bisozi HC IV
Tooro	Kasese District	Nyamwamba Division	Rukoki HC IV
Tooro	Kasese District	Lubirha Town Council	Bwera Hospital
Tooro	Kasese District	Kisinga Kagando Town Council	Kagando Hospital
Tooro	Kasese District	Nyamwamba Division	Kasese Municipal Council HC III
Tooro	Kasese District	Muhokya Subcounty	Nyamirami HC IV
Tooro	Kasese District	Kyabarungira Subcounty	Rwesande HC IV
Tooro	Kasese District	Kitholhu Subcounty	Kanyatsi HC II
Tooro	Kasese District	Kinyamaseke Town Council	Kinyamaseke HC III
Tooro	Kasese District	Karambi Bukonzo Subcounty	Karambi (Kasese) HC III
Tooro	Kasese District	Ihandiro Subcounty	Ihandiro HC III
Tooro	Kasese District	Bugoye Subcounty	Bugoye HC III
Tooro	Kasese District	Nyakiyumbu Subcounty	Mushenene HC III
Tooro	Kasese District	Kitswamba Subcounty	Kitswamba HC III
Tooro	Kasese District	Kyarumba Town Council	Kyarumba Phc HC III
Tooro	Kasese District	Maliba Subcounty	Maliba HC III
Tooro	Kasese District	Hima Town Council	Hima HC III
Tooro	Kasese District	Kabatoro Town Council	Katwe (Kabatoro) HC III
Tooro	Kasese District	Mahango Subcounty	Mahango HC III
Tooro	Kasese District	Kyabarungira Subcounty	Kabatunda HC III
Tooro	Kasese District	Muhokya Subcounty	Muhokya HC III
Tooro	Kasese District	Kilembe Subcounty	Kalibu HC III
Tooro	Kasese District	Kyondo Subcounty	Kyondo HC III
Tooro	Kasese District	Rukoki Subcounty	Buhaghura HC III
Tooro	Kasese District	Karusandara Subcounty	Karusandara HC III
Tooro	Kitagwenda District	Kitagwenda Town Council	Ntara HC IV
Tooro	Kitagwenda District	Kabujogera Town Council	Kicheche HC III
Tooro	Kitagwenda District	Buhanda Subcounty	Kakasi COU HC II
Tooro	Kitagwenda District	Mahyoro Subcounty	Mahyoro HC III
Tooro	Kitagwenda District	Nyabbani Subcounty	Nyabbani HC III
Tooro	Kitagwenda District	Kanara Subcounty (Kitagwenda District)	Kanara HC III
Tooro	Kyegegwa District	Kyegegwa Town Council	Kyegegwa HC IV
Tooro	Kyegegwa District	Rwentuha Subcounty	Kazinga HC III
Tooro	Kyegegwa District	Mpara Subcounty	Bujubuli HC III
Tooro	Kyegegwa District	Mpara Town Council	Mpara HC III
Tooro	Kyegegwa District	Hapuuyo Subcounty	Hapuuyo HC III
Tooro	Kyegegwa District	Kakabara Subcounty	Kakabara HC III
Tooro	Kyegegwa District	Kasule Subcounty	Kasule HC III
Tooro	Kyegegwa District	Ruyonza Subcounty	Kishagazi HC II
Tooro	Kyegegwa District	Ruyonza Subcounty	Karwenyi HC III
Tooro	Kyegegwa District	Kigambo Subcounty	Kigambo HC III
Tooro	Kyenjojo District	Kyenjojo Town Council	Kyenjojo Hospital
Tooro	Kyenjojo District	Butiiti Subcounty	Butiiti HC III
Tooro	Kyenjojo District	Kyarusozi Town Council	Kyarusozi HC IV
Tooro	Kyenjojo District	Bugaaki Subcounty	Kyakatara HC III
Tooro	Kyenjojo District	Katooke Town Council	Katooke HC III
Tooro	Kyenjojo District	Butunduuzi Town Council	St. Theresa Lisieux Rwibaale HC IV
Tooro	Kyenjojo District	Kigarale Subcounty	Kigaraale HC III
Tooro	Kyenjojo District	Rugombe Town Council	Nyamabuga HC III
Tooro	Kyenjojo District	Butunduuzi Town Council	Butunduzi HC III
Tooro	Kyenjojo District	Kigoyera Subcounty	Kigoyera HC II
Tooro	Kyenjojo District	Butiiti Subcounty	Villa Maria (Kaihura) HC II
Tooro	Kyenjojo District	Katooke Subcounty	Myeri HC II
Tooro	Kyenjojo District	Kisojo Town Council	Kisojo HC III
Tooro	Kyenjojo District	Kifuka Town Council	Bufunjo HC III
Tooro	Kyenjojo District	Kyembogo Subcounty	Kyembogo Holy Cross HC III
Tooro	Kyenjojo District	Kihuura Subcounty	Kyakaramata HC II
Tooro	Ntoroko District	Karugutu Town Council	Karugutu HC IV



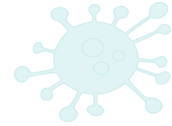
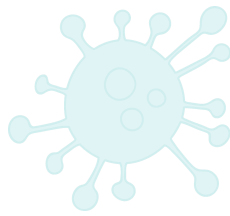
COVID-19 VACCINATION SITES

REGION	DISTRICT	SUBCOUNTY	HEALTH FACILITY
Tooro	Ntoroko District	Rwebisengo Town Council	Rwebisengo HC III
Tooro	Ntoroko District	Kanara Town Council	Ntoroko HC III
Tooro	Ntoroko District	Bweramule Subcounty	Bweramule HC II
West Nile	Adjumani District	Adjumani Town Council	Adjumani Hospital
West Nile	Adjumani District	Pakele Subcounty	Pakele HC III
West Nile	Adjumani District	Adjumani Town Council	Adjumani Mission HC III
West Nile	Adjumani District	Dzaipi Subcounty	Dzaipi HC III
West Nile	Adjumani District	Adropi Subcounty	Openzinzi HC III
West Nile	Adjumani District	Ciforo Subcounty	Ciforo HC III
West Nile	Adjumani District	Dzaipi Subcounty	Elema HC II
West Nile	Adjumani District	Ukusijoni Subcounty	Ukusijoni HC III
West Nile	Adjumani District	Pakele Subcounty	Ayilo I HC III
West Nile	Adjumani District	Arinyapi Subcounty	Arinyapi HC III
West Nile	Adjumani District	Ofua Subcounty	Ofua (Ofua) HC III
West Nile	Adjumani District	Pachara Subcounty	Robidire HC III
West Nile	Adjumani District	Dzaipi Subcounty	Pagirinya HC III
West Nile	Adjumani District	Pachara Subcounty	Pachara HC II
West Nile	Adjumani District	Arinyapi Subcounty	Ogolo HC II
West Nile	Adjumani District	Pachara Subcounty	Arra HC II
West Nile	Adjumani District	Itirikwa Subcounty	Mungula HC IV
West Nile	Adjumani District	Ofua Subcounty	Kureku HC II
West Nile	Adjumani District	Ukusijoni Subcounty	Ayiri HC III
West Nile	Adjumani District	Pakele Subcounty	Maryland Kocoa HC III
West Nile	Adjumani District	Itirikwa Subcounty	Zoka HC II
West Nile	Adjumani District	Arinyapi Subcounty	Elegu HC II
West Nile	Adjumani District	Pakele Subcounty	Bira HC III
West Nile	Arua District	River Oli Division	River Oli HC IV
West Nile	Arua District	Arua Hill Division	Arua Regional Referral Hospital
West Nile	Arua District	Vurra Subcounty	Kuluva Hospital
West Nile	Arua District	Manibe Subcounty	Ombidriondrea HC III
West Nile	Arua District	Pajulu Subcounty	Ediofe HC III
West Nile	Arua District	Adumi Subcounty	Adumi HC IV
West Nile	Arua District	Vurra Subcounty	Vurra HC III
West Nile	Arua District	Ayivuni Subcounty	Ayivuni HC III
West Nile	Arua District	Aroi Subcounty	Aroi HC III
West Nile	Arua District	Dadamu Subcounty	Orivu HC III
West Nile	Arua District	Ajia Subcounty	Ajia HC III
West Nile	Arua District	Pajulu Subcounty	Pajulu HC III
West Nile	Arua District	Oluko Subcounty	Riki HC III
West Nile	Arua District	Logiri Subcounty	Logiri HC III
West Nile	Arua District	Vurra Subcounty	Opia HC III
West Nile	Arua District	Arivu Subcounty	Bondo HC III
West Nile	Koboko District	Southern Division (Koboko MC)	Koboko Hospital
West Nile	Koboko District	Ludara Subcounty	Ludara HC III
West Nile	Koboko District	Abuku Subcounty	Gborokolongo HC III
West Nile	Koboko District	Kuluba Subcounty	Ayipe HC III
West Nile	Koboko District	Lobule Subcounty	Lobule HC III
West Nile	Koboko District	Dranya Subcounty	Dranya HC III
West Nile	Koboko District	Midia Subcounty	Dricile HC III
West Nile	Koboko District	Ludara Subcounty	Chakulia HC II
West Nile	Koboko District	Northern Division (Koboko MC)	Koboko Mission HC III
West Nile	Koboko District	Kuluba Subcounty	Oraba HC II
West Nile	Koboko District	Kuluba Subcounty	Kuluba HC II
West Nile	Koboko District	Lobule Subcounty	Pijoke HC II
West Nile	Koboko District	Lobule Subcounty	Lurujo HC II
West Nile	Koboko District	Ludara Subcounty	Bamure HC II
West Nile	Koboko District	Kuluba Subcounty	Pamodo HC II



COVID-19 VACCINATION SITES

REGION	DISTRICT	SUBCOUNTY	HEALTH FACILITY
West Nile	Madi-Okollo District	Okollo Subcounty	Okollo HC III
West Nile	Madi-Okollo District	Rigbo Subcounty	Ocea HC II
West Nile	Madi-Okollo District	Inde Town Council	Inde HC III
West Nile	Madi-Okollo District	Offaka Subcounty	Offaka HC III
West Nile	Madi-Okollo District	Rhino-Camp Subcounty	Rhino Camp HC IV
West Nile	Madi-Okollo District	Rigbo Subcounty	Oduobu HC III
West Nile	Madi-Okollo District	Pawor Subcounty	Pawor HC III
West Nile	Madi-Okollo District	Rigbo Subcounty	Olujobo HC III
West Nile	Maracha District	Nyadri Subcounty	St. Josephs Maracha Hospital
West Nile	Maracha District	Maracha Town Council	Maracha HCIV
West Nile	Maracha District	Oluvu Subcounty	Oluvu HC III
West Nile	Maracha District	Yivu Subcounty	Wadra HC III
West Nile	Maracha District	Okokoro Town Council	Kijomoro HC III
West Nile	Moyo District	Moyo Town Council	Moyo Hospital
West Nile	Moyo District	Metu Subcounty	Metu HC III
West Nile	Moyo District	Lefori Subcounty	Lefori HC III
West Nile	Moyo District	Moyo Subcounty	Moyo Mission HC IV
West Nile	Moyo District	Laropi Subcounty	Laropi HC III
West Nile	Moyo District	Dufile Subcounty	Dufile HC III
West Nile	Moyo District	Moyo Town Council	Besia HC III
West Nile	Moyo District	Moyo Subcounty	Logoba HC III
West Nile	Moyo District	Metu Subcounty	Eremi HC III
West Nile	Moyo District	Moyo Subcounty	Eria HC III
West Nile	Moyo District	Metu Subcounty	Fr. Bilbao HC III
West Nile	Nebbi District	Central Division (Nebbi MC)	Nebbi Hospital
West Nile	Nebbi District	Nebbi Subcounty	Goli HC IV
West Nile	Nebbi District	Erussi Subcounty	Orussi HC III
West Nile	Nebbi District	Parombo Town Council	Parombo HC III
West Nile	Nebbi District	Kucwiny Subcounty	Kucwiny HC III
West Nile	Nebbi District	Nyaravur Subcounty	Angal Hospital
West Nile	Nebbi District	Kucwiny Subcounty	Padwot Midyere HC III
West Nile	Nebbi District	Atego Subcounty	Paminya HC III
West Nile	Nebbi District	Nebbi Subcounty	Kalowang HC III
West Nile	Obongi District	Itula Subcounty	Itula HC III
West Nile	Obongi District	Itula Subcounty	Luru HC III
West Nile	Obongi District	Obongi Town Council	Obongi HC IV
West Nile	Obongi District	Itula Subcounty	Palorinya HC III
West Nile	Obongi District	Aliba Subcounty	Aliba HC III
West Nile	Pakwach District	Pakwach Town Council	Pakwach HC IV
West Nile	Pakwach District	Panyimur Subcounty	Panyimur HC III
West Nile	Pakwach District	Wadelai Subcounty	Wadelai HC III
West Nile	Pakwach District	Pakwach Subcounty	Panyigoro HC III
West Nile	Pakwach District	Panyango Subcounty	Pakia HC III
West Nile	Pakwach District	Wadelai Subcounty	Ragem HC II
West Nile	Pakwach District	Panyimur Subcounty	Dei HC II
West Nile	Pakwach District	Alwii Subcounty	Alwi HC III
West Nile	Pakwach District	Panyango Subcounty	Pokwero HC III
West Nile	Pakwach District	Panyimur Subcounty	Boro HC II
West Nile	Terego District	Omugo Subcounty	Omugo HC IV
West Nile	Terego District	Uriama Subcounty	Bileafe HC III
West Nile	Terego District	Aii-Vu Subcounty	Cilio HC III



COVID-19 VACCINATION SITES

REGION	DISTRICT	SUBCOUNTY	HEALTH FACILITY
West Nile	Terego District	Katrini Subcounty	Wandi HC III
West Nile	Terego District	Odupi Subcounty	Yinga HC III
West Nile	Terego District	Odupi Subcounty	Siripi HC III
West Nile	Terego District	Bileafe Subcounty	St. Francis (Ocodri) HC III
West Nile	Terego District	Odupi Subcounty	Odupi HC III
West Nile	Terego District	Omugo Subcounty	Widi(Omugo extention) HC III
West Nile	Terego District	Uriama Subcounty	Ofua (Uriama) HC III
West Nile	Terego District	Katrini Subcounty	Oriajini Hospital
West Nile	Terego District	Odupi Subcounty	Otumbari St. Lawrence HC III
West Nile	Yumbe District	Yumbe Town Council	Yumbe HC IV
West Nile	Yumbe District	Lodonga Town Council	Lodonga HC IV
West Nile	Yumbe District	Midigo Subcounty	Midigo HC IV
West Nile	Yumbe District	Romogi Subcounty	Barakala HC III
West Nile	Yumbe District	Odravu Subcounty	Kulikulinga HC III
West Nile	Yumbe District	Ariwa Subcounty	Ariwa HC III
West Nile	Yumbe District	Kuru Subcounty	Yumbe Hospital
West Nile	Yumbe District	Kei Subcounty	Matuma HC III
West Nile	Yumbe District	Drajini Subcounty	Dramba HC III
West Nile	Yumbe District	Kochi Subcounty	Kochi HC III
West Nile	Yumbe District	Kochi Subcounty	Koro Health Centre HC III
West Nile	Yumbe District	Apo Subcounty	Apo HC III
West Nile	Yumbe District	Midigo Subcounty	Mocha HC III
West Nile	Yumbe District	Romogi Subcounty	Bidibidi Health Centre HC III
West Nile	Yumbe District	Kululu Subcounty	Yoyo HC III
West Nile	Yumbe District	Odravu Subcounty	Bangatuti Health Centre HC III
West Nile	Yumbe District	Romogi Subcounty	Swinga Health Centre HC III
West Nile	Yumbe District	Kerwa Subcounty	Kerwa HC III
West Nile	Yumbe District	Kei Subcounty	Kei HC III
West Nile	Yumbe District	Odravu Subcounty	Yangani Health Centre HC III
West Nile	Yumbe District	Odravu Subcounty	Bolomoni Health Centre HC III
West Nile	Yumbe District	Ariwa Subcounty	Okubani Health Centre HC III
West Nile	Yumbe District	Romogi Subcounty	Iyete Health Centre HC III
West Nile	Yumbe District	Romogi Subcounty	Twajiji Health Centre HC III
West Nile	Yumbe District	Kululu Subcounty	Jomorogo Health Centre HC III
West Nile	Yumbe District	Odravu Subcounty	Igamara Health Centre HC III
West Nile	Yumbe District	Kululu Subcounty	Luzira Health Centre HC III
West Nile	Yumbe District	Kululu Subcounty	Komgbe Health Centre HC III
West Nile	Yumbe District	Kochi Subcounty	Yayari Health Centre HC III
West Nile	Yumbe District	Ariwa Subcounty	Ayivu Health Centre HC III
West Nile	Zombo District	Zeu Subcounty	Zeu HC III
West Nile	Zombo District	Nyapea Subcounty	Nyapea Hospital
West Nile	Zombo District	Paidha Town Council	Paidha HC III
West Nile	Zombo District	Warr Subcounty	Warr HC IV
West Nile	Zombo District	Jang Okoro Subcounty	Jangokoro HC III
West Nile	Zombo District	Warr Subcounty	Agjermach HC III
West Nile	Zombo District	Kango Subcounty	Kango HC III
West Nile	Zombo District	Abanga Subcounty	Pakadha HC III
West Nile	Zombo District	Alangi Subcounty	Alangi HC III